

DESIGN BY :
BIBI DESIGN

Bibi design is a creative studio founded in Turin in 2014 from an idea of Alessandro Marzio and Eugenio Barra brothers.

It specialize in product and furniture design.

Bibi design believe in a responsible, aesthetic and functional design.

The studio won in 2015 A'design Award with Sella/Sellino projects.

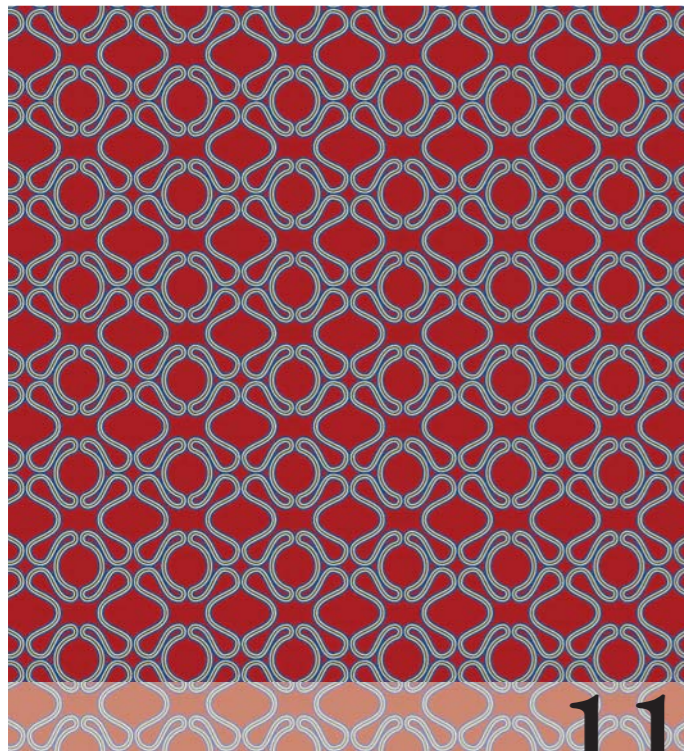


abitex

STUDIO#21

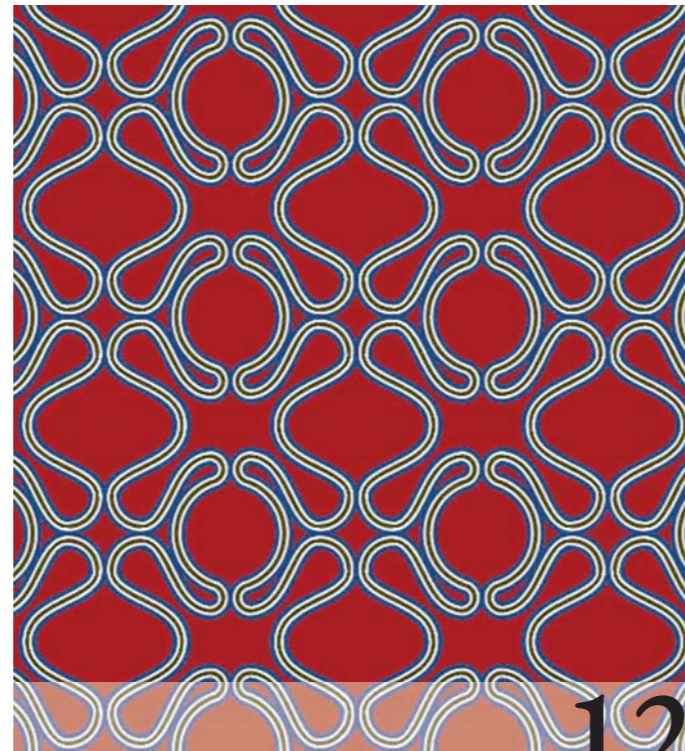
ABITEX LAB TEAM WILL BE HAPPY TO PRINT OUT YOUR OWN DESIGN

SCALE 1:5



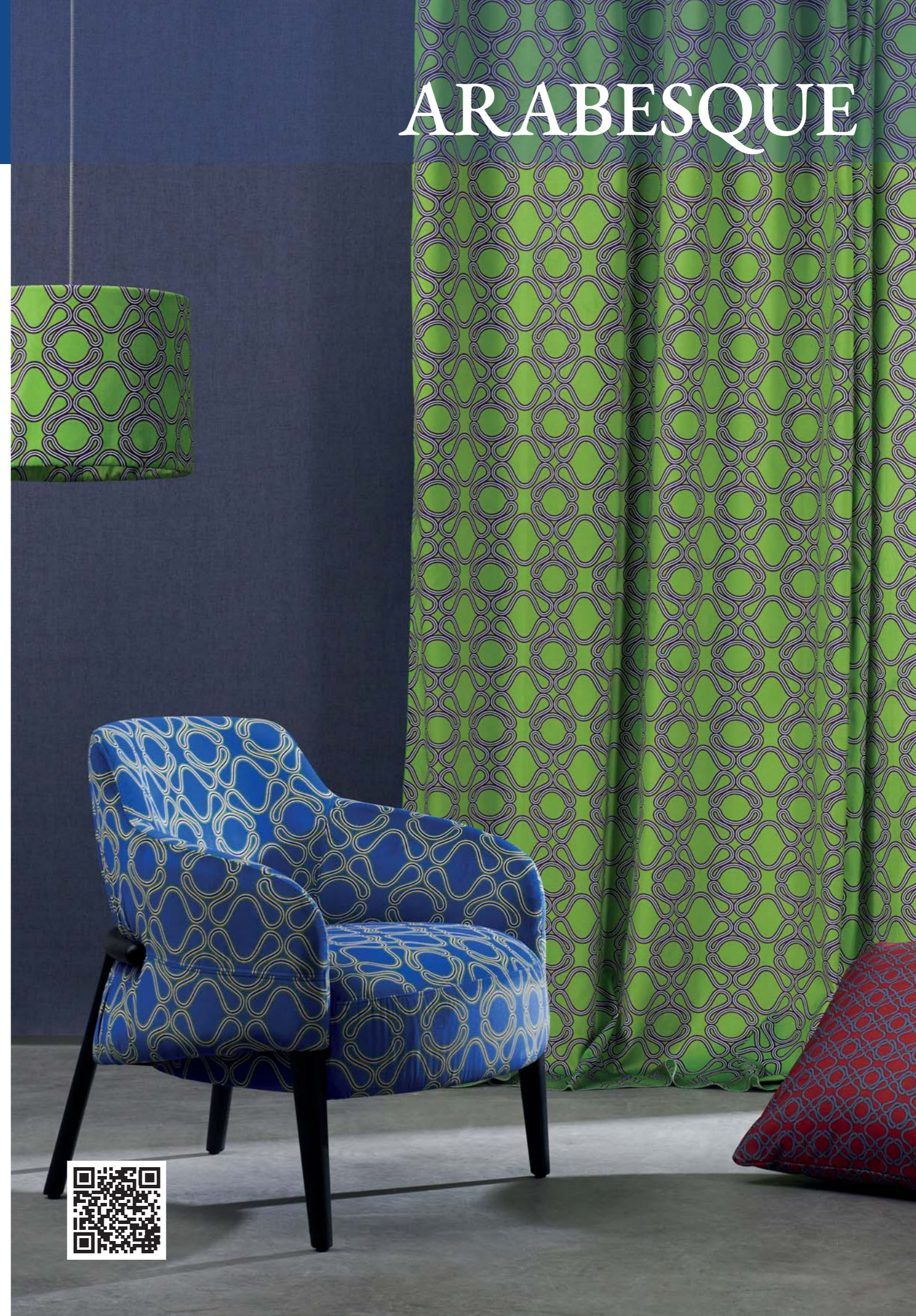
11

SCALE 1:5



12

ARABESQUE

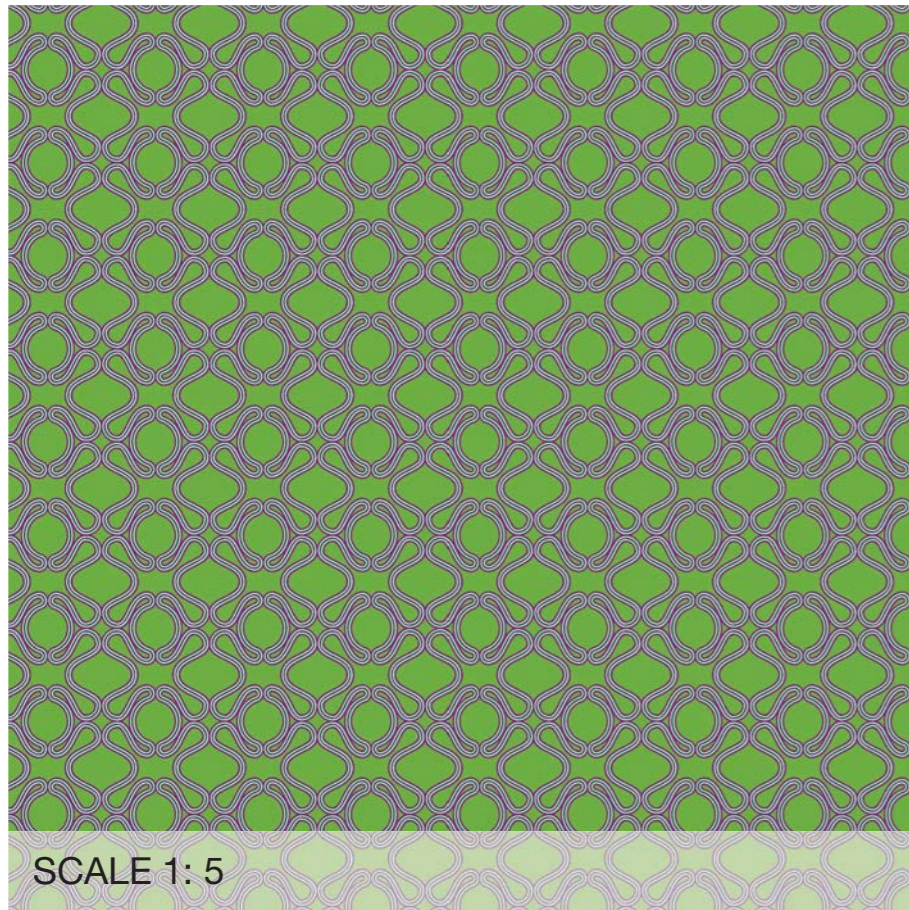




SCALE 1:5

horo dis. 33 - st. 11 - 701

horo dis. 33 - st. 11 - 809



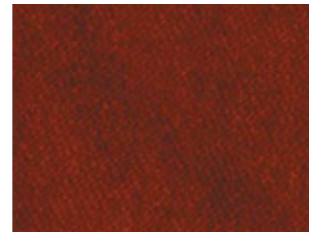
SCALE 1:5



aida - 712



horo dis. 66 - 508



aida - 304



aida - 801



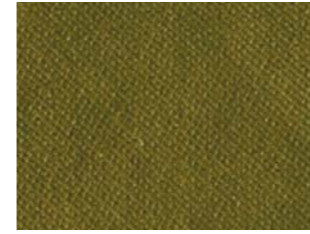
aida - 305



aida - 800



horo dis. 66 - 700



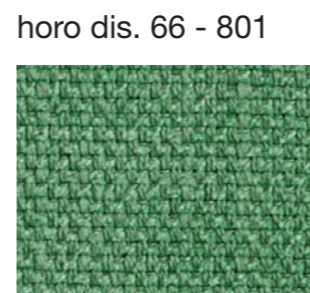
aida - 804



aida - 003



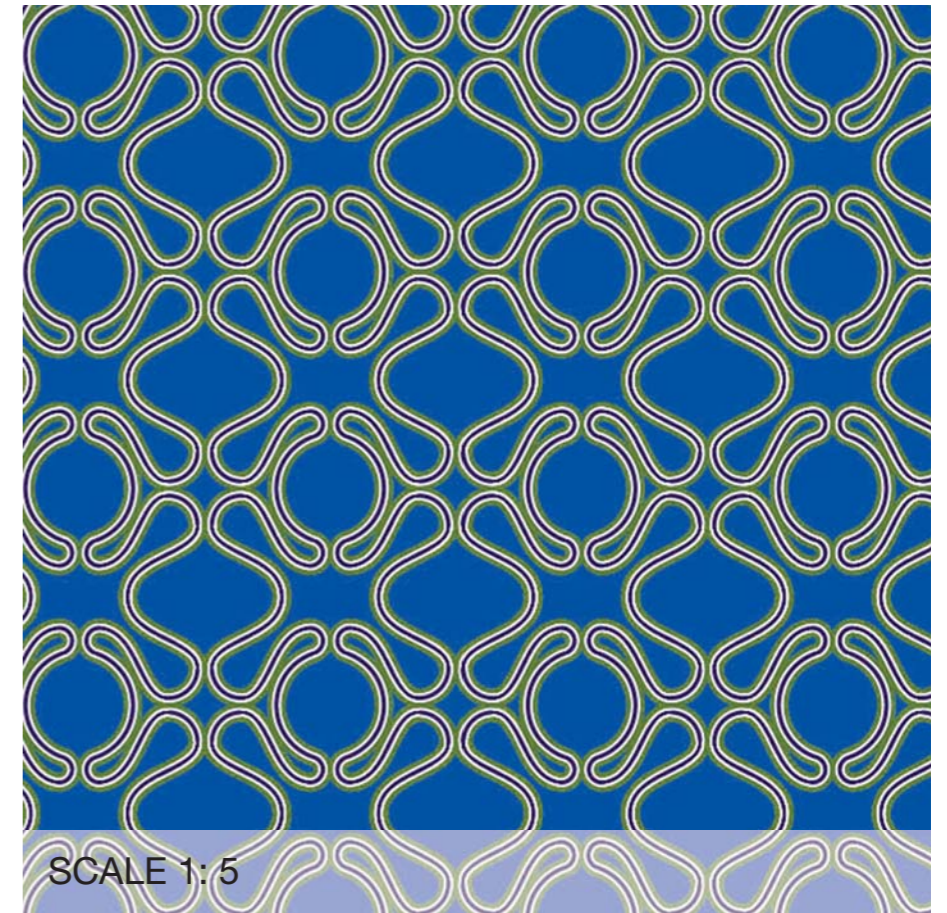
aida - 306



horo dis. 66 - 801



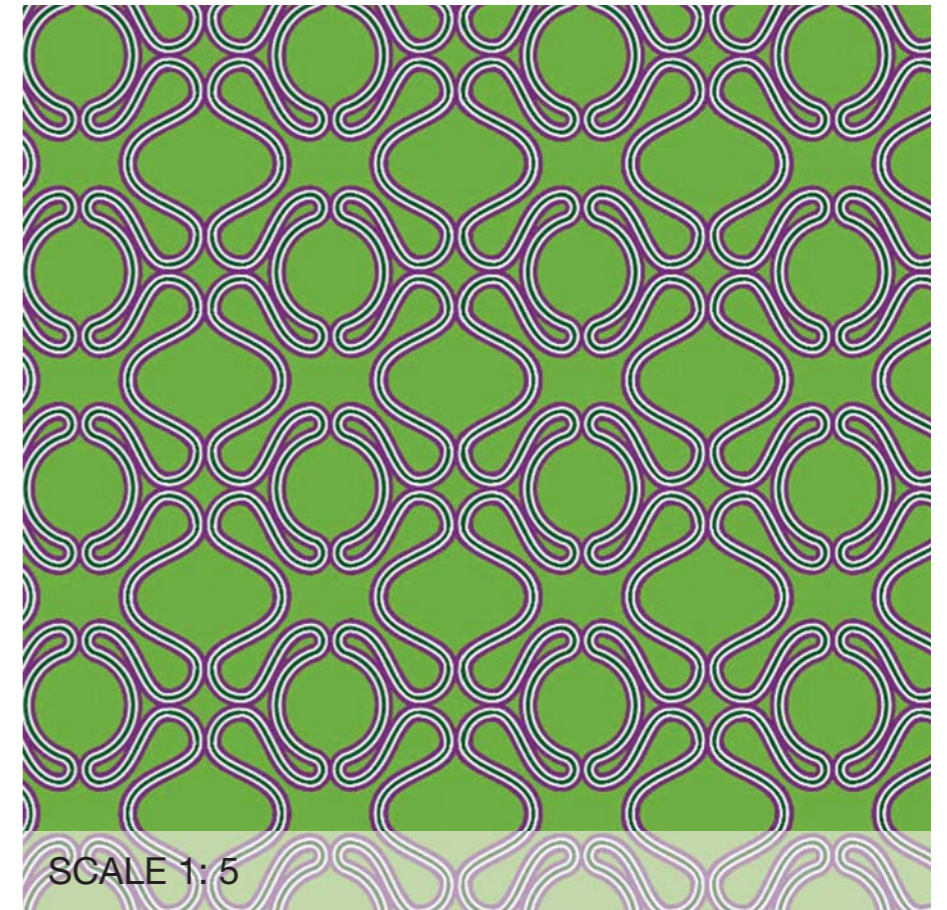
horo dis. 66 - 700



SCALE 1:5

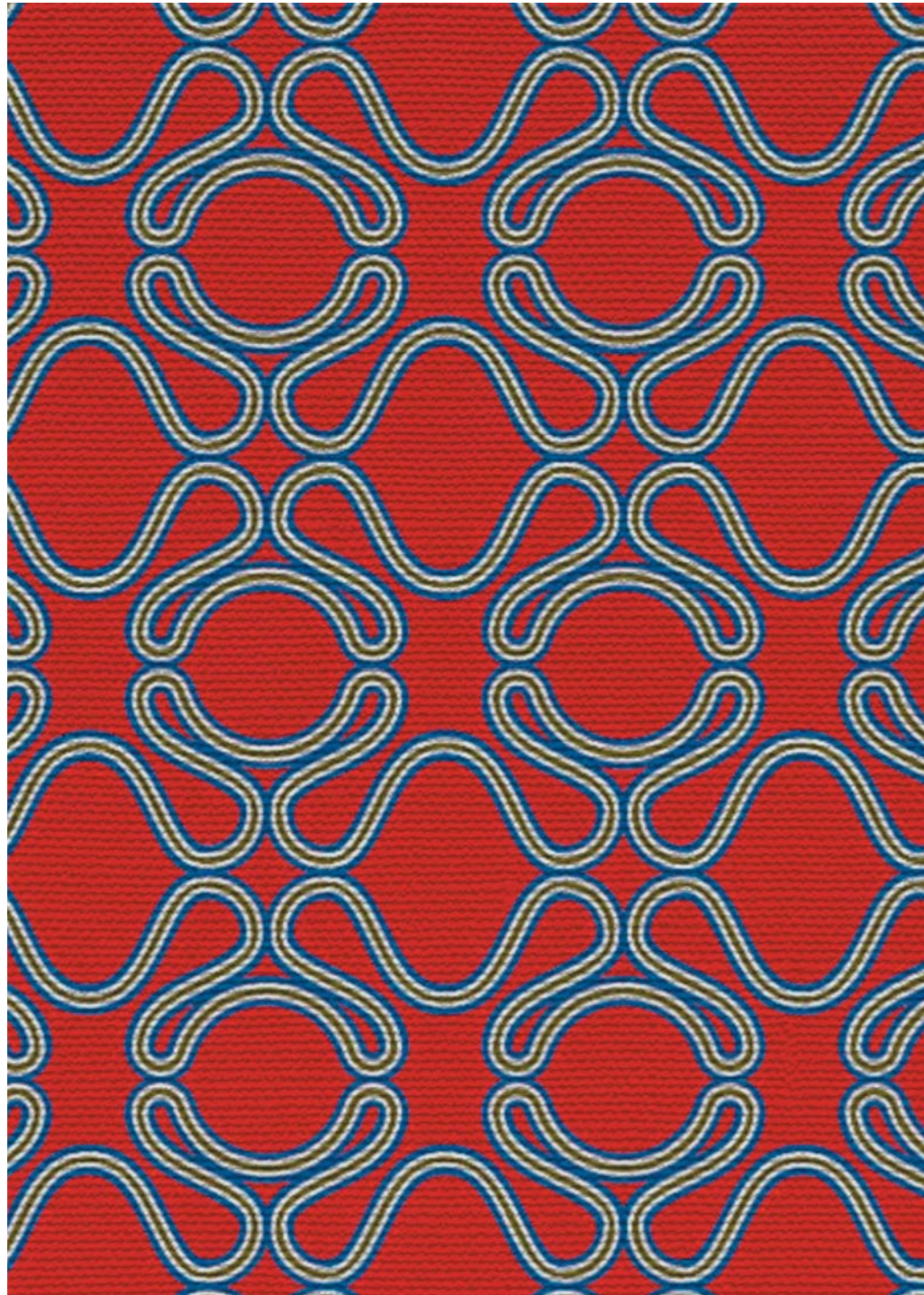
aida - st. 12 - 701

aida - st. 12 - 809



SCALE 1:5

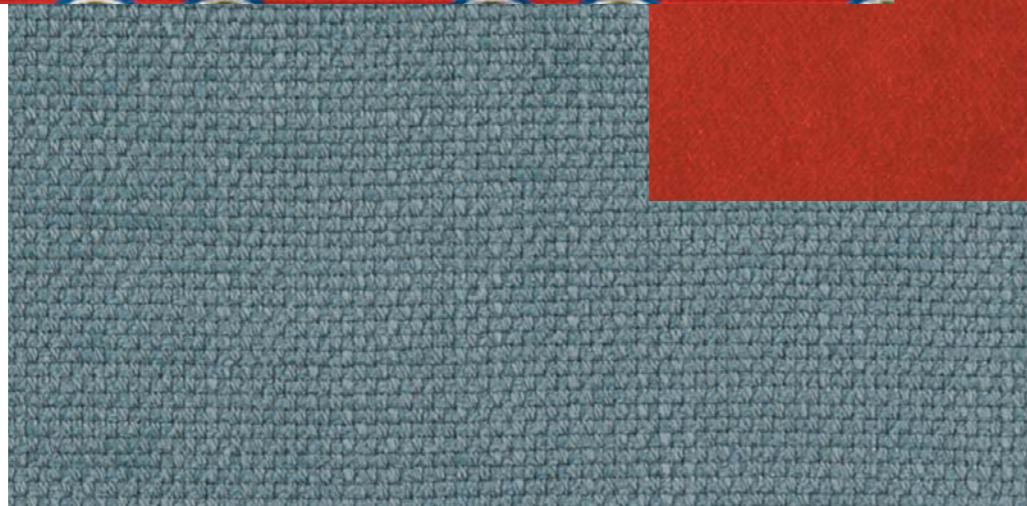
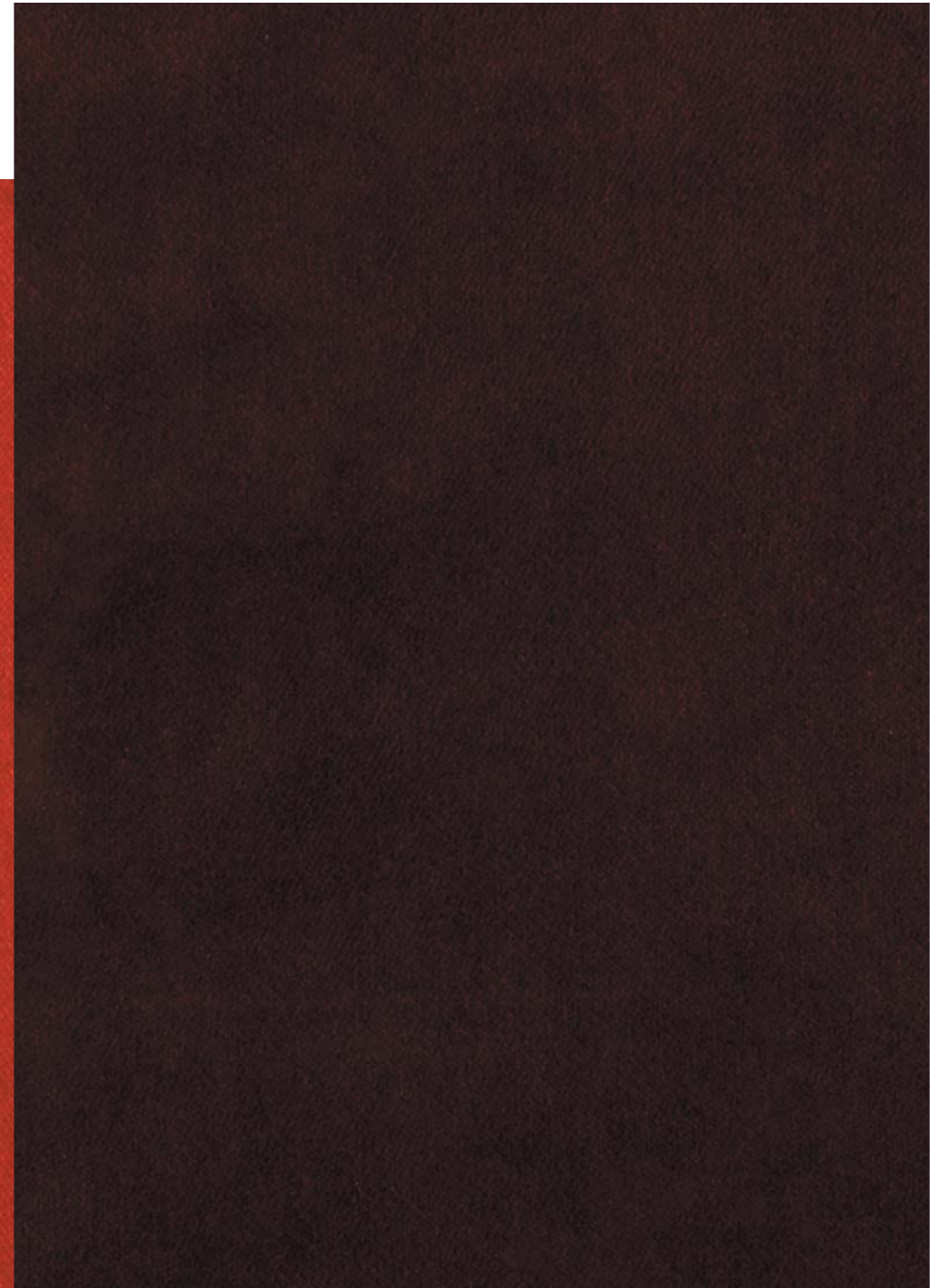
horo dis. 33 - st. 11 - 300



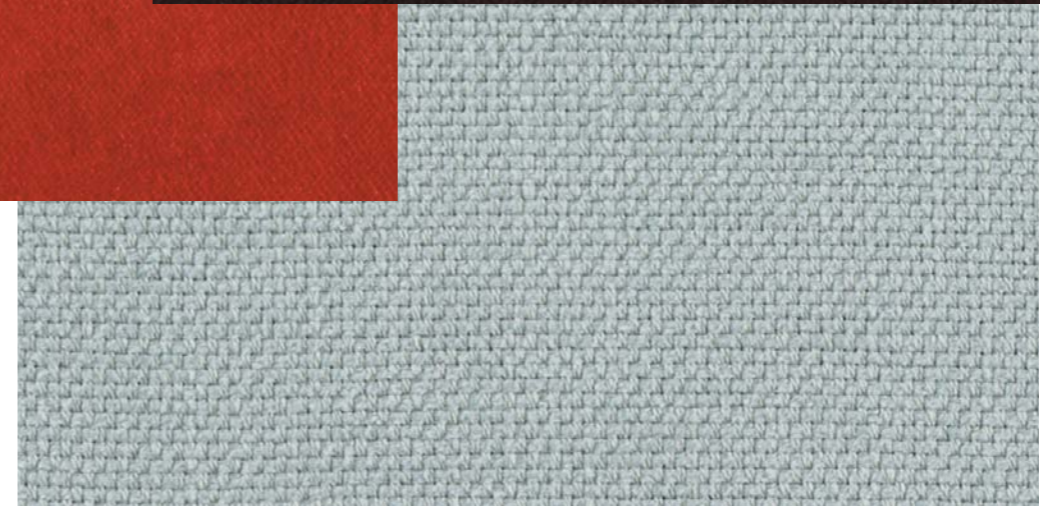
abitex
STUDIO#21

aida - st. 12 - 300

aida - 302



horo dis. 66 - 706



horo dis. 66 - 707

